

# SKF Endoscope TKES 1S

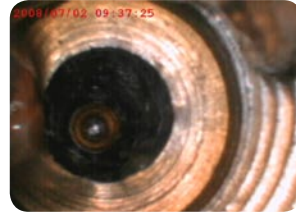
## Fast and easy inspection with video function

The SKF Endoscope TKES 1S is a compact handheld instrument that allows the user to view applications in restricted spaces that could not normally be seen with the naked eye. The display unit with a 3.5" TFT LCD screen has the capacity of viewing, storing and reviewing still and video images. Images can also be displayed directly on a TV screen or stored and transferred to a PC for viewing later.

The flexible insertion tube uses a miniature camera, equipped with powerful variable LED lighting, to provide the screen image. The TKES 1S can be used as a first line inspection tool and save time and money by reducing the need to disassemble items for inspection.

- Compact, palm sized endoscope allows true portability
- Easy to assemble and use, no special training required
- Advanced high quality optics gives an excellent full screen image and good resolution compared to fibre optic type endoscopes
- The 3.5" extra-wide view angle and clear TFT monitor, protected by oil and scratch resistant tempered glass allows for easy viewing of photos and videos and helps image interpretation
- Fully flexible 1 metre (3.3 ft) insertion tube with a small tip diameter of 5,5 mm allows easy access to most applications
- The 1 GB SD memory card provided can store up to 30 000 photos or 4–5 hours of video. This is more than enough for almost any user
- Photos and videos can be transferred to PC using the USB cable provided. No special software required for most MS Windows® operating systems
- Built-in step-less adjustable LED lighting helps prevent under and over illumination of target
- Water resistant flexible tube can be used in applications where moisture is present
- 67 ° field of view offers an excellent viewing range for restricted space applications
- Supplied with right-angle side view adapter
- Multilingual menu on display unit
- Supplied complete with all necessary cables, universal mains charger and carrying case





## Technical data

<b>Designation</b>	<b>TKES 15</b>
<b>Insertion tube and light source</b>	
<b>Image sensor</b>	CMOS Image Sensor
<b>Resolution (dynamic / static)</b>	320(H)*240(V) / 640(H)*480(V)
<b>Size tip (insertion tube ) diameter</b>	5,5 mm (0.22 in)
<b>Tube length</b>	1 m (39.4 in)
<b>Field of View (FOV)</b>	67°
<b>Depth of Field (DOF)</b>	1,5 cm – 10 cm (0.6 – 4 in)
<b>Light source</b>	4 White LED (0-275 Lux/4 cm)
<b>Probe working temperature</b>	-20 to 70 °C (-5 to 158 °F)
<b>Ingress protection level</b>	IP 57 5...Protected against dust-limited ingress (no harmful deposit). 7...Protected against the effect of immersion between 15 cm and 1m.
<b>Display unit</b>	
<b>Power</b>	DC5V
<b>Display</b>	3.5" TFT LCD Monitor 320*240 Pixels
<b>Interface</b>	Mini usb 1.1/ AV out / AV in/
<b>Battery (not user serviceable)</b>	Rechargeable Li-Polymer Battery (3.7V). Typically 4 hours operation after a 2 hour charge.
<b>Video out format</b>	NTSC & PAL
<b>Recording medium</b>	SD card 1 GB supplied – storage capacity ± 30 000 photos, or 4–5 hours video. (SD Cards up to 2 GB can be used)
<b>Still image/video recording format</b>	JPEG (640*480)/ ASF (320*240)
<b>Working and storage/ battery charging temperature range</b>	-20 to 60 °C/0 to 40 °C (-4 to 140 °F/32 to 104 °F)
<b>Functions</b>	Snapshot, video recording, picture and video review on LCD screen, TV Out, transfer of picture and video from SD card to PC
<b>Weights and dimensions (complete case)</b>	2,8 kg / 44 x 32 x 8 cm (6,2 lbs / 17.4 x 12.5 x 3.2 in)

© SKF is a registered trademark of the SKF Group

© SKF Group 2009

The contents of this publication are the copyright of the publisher and may not be reproduced (even extracts) unless prior written permission is granted. Every care has been taken to ensure the accuracy of the information contained in this publication but no liability can be accepted for any loss or damage whether direct, indirect or consequential arising out of the use of the information contained herein.

MP/PDS TKES1 EN • October 2009

[www.mapro.skf.com](http://www.mapro.skf.com) • [skf.com/mount](http://skf.com/mount) • [skf.com/lubrication](http://skf.com/lubrication)

